



67 New Thrills in Tractor Operation

New CASE "S" SERIES TRACTORS

"Shock Absorber" Seat

1. Coil spring support contributes to "floating" ride.
2. Rubber shock absorber takes up rebound of rough riding. Rubber tips under seat further absorb shocks.
3. Seat pushes backward and upward for safe standing.
4. Seat is adjustable forward or backward to fit stature of operator.
5. Deep cushioned seat gives you "easy chair" comfort.
6. Seat located high up away from dust.
7. Seat cushion is water-proof, removable.

"Eagle Eye" Visibility

8. Streamstyled for clear view—narrow, tapered hood lines—16-inch wide radiator.
9. High platform and seat, centrally located, aids visibility.

10. Exhaust and air intake through center of hood for clear vision on both sides of tractor.

11. Full view of work and implements.
12. Easy accurate belt line-up—belt pulley in clear view on right hand side.
13. Gauges clearly visible on dash panel—engine temperature, oil pressure and ammeter.

Safe, Roomy Platform

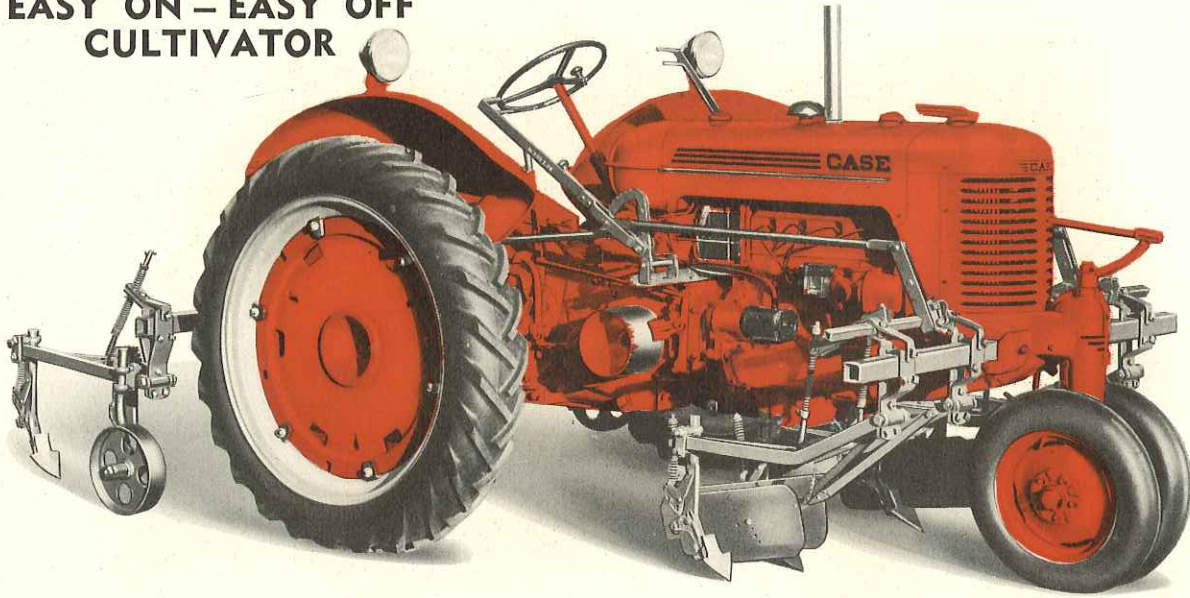
14. Full freedom of action—safety side wings.

"Finger Tip" Steering

15. Large, rubber, "easy grip" steering wheel for sure handling.
16. Spinner knob for fast one-hand turning.
17. New anti-friction roller bearing construction makes steering easier.
18. "No-play" linkage to front wheels for positive, easy steering.
19. Tendency of front wheels to return to straight-forward position helps steering.

New

**MODEL "SC" WITH
EASY ON - EASY OFF
CULTIVATOR**



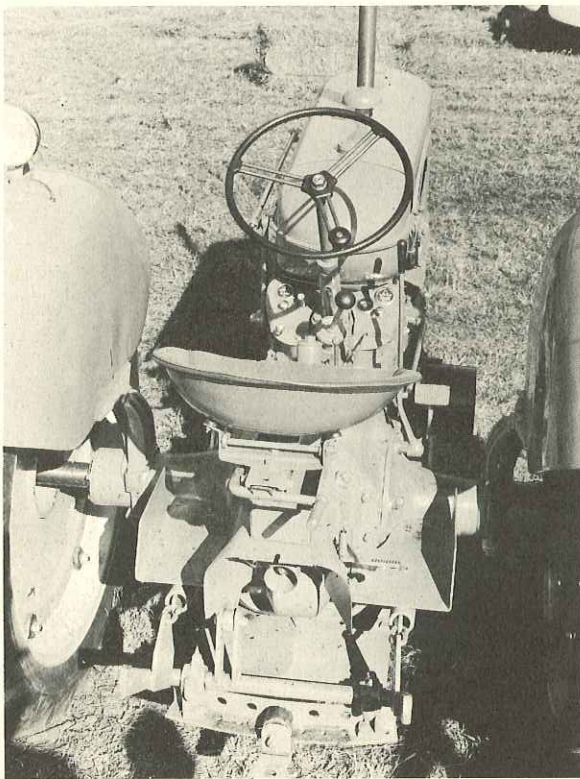
Synchronized Steering Response

20. Quick, wide dodge for close cultivation.
High leverage for short turns.

"Toe Touch" Assisting Brakes

21. Brakes convenient to driver's feet for
short or pivot turns in soft ground.

1 1 1



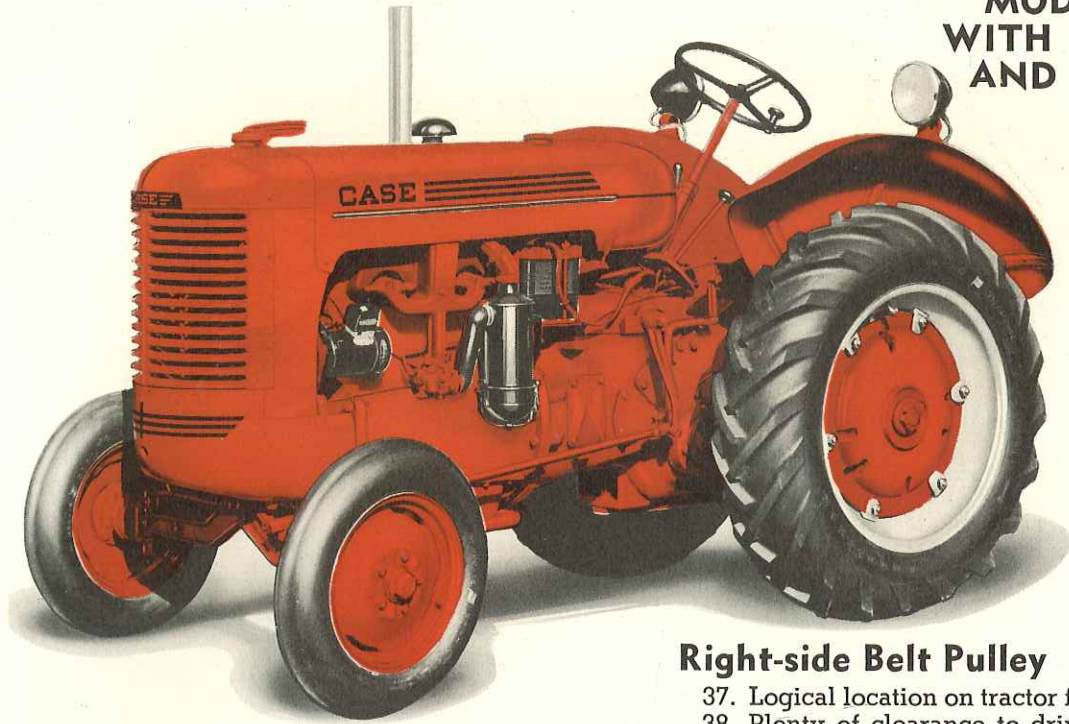
22. Braking action is smooth, positive and
easy, because of new "floating disk"
brake construction.
23. Brakes are easily locked, to hold tractor
stationary on side hills, belt work, etc.

"Easy Arms-Reach" Controls

24. Choke, magneto switch, and light buttons
on instrument panel. (Front choke for
hand cranking.)
25. Convenient heat control for low cost fuels,
if used.
26. Foot or hand starter button convenient.
27. Auto type gear lever is easy to operate.
28. Easy-reach lever engages power take-off.
29. Handy governor control.
30. Implement lift pedal near right heel.

Well-planned dash puts gauges and controls within easy vision and reach on these "S" Series tractors. . . . The high platform and seat, thin, rubber-rimmed steering wheel, narrow, tapered hood lines, and center-located air intake and exhaust give the driver unhampered vision of work and implements at all times. . . . Hand and foot controls are all grouped for easy touch operation. . . . The crank is clamped under the seat, and tool box directly below, both easy to get at. . . . Power take-off is centrally located and well guarded. . . . Belt pulley on right-hand side for easy line-up. . . . Swinging, self-locking drawbar fully accessible and adjustable for various P.T.O. hitches. . . . On the "SC", a touch on the Motor-Lift pedal, near the driver's right heel, causes mounted implements to raise and lower by engine power whether the tractor is moving or standing still. . . . And rear wheel tread is quickly adjusted to row spacing by sliding rear wheels in or out on axle shafts—the fenders can be moved in or out also. . . . Lights on the fenders make day-light work out of night-time assignments. . . . Everything on these tractors is built to help master more work with less effort and greater economy.

New
**MODEL "S"
 WITH STARTER
 AND LIGHTS**



- 31. Hand clutch is long, easy to reach from seat or ground—has a rubber grip, for sure, comfortable operation.
- 32. Pulley brake on clutch lever quickly stops coasting of tractor or belt driven machines.

Centered Power Take-off

- 33. Directly between rear wheels, offers a straight line drive—easily coupled to implement—easy to operate over rough ground—equal turns to right or left.

Adjustable Drawbar

- 34. Full swinging—load helps tractor to turn.
- 35. Self-locking—keeps implement straight in line when backing.
- 36. Adjustable for high or low hitch, or can be moved in and out, to centralize hitch with P.T.O. universals.

Deep-cushioned seat with spring-and-rubber mounting absorbs shocks, gives you an "easy-chair" ride. . . . Seat pushes back for standing or draining off water or snow. . . . Seat cover is weatherproof and removable. . . . Platform is roomy, safe, and convenient whether you sit or stand.

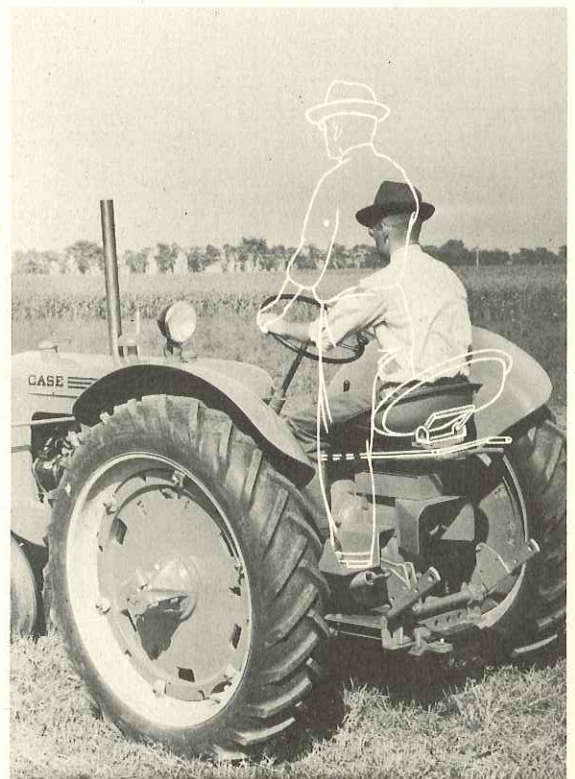
Steering on the "S" Series is the easiest you've known—large, easy-grip steering wheel with spinner knob, special bearing construction in the steering arm and front wheel spindle, makes steering easy. These tractors feature the famous Case "Synchronized Steering"—a wide, quick dodge at the first half turn of the steering wheel for close cultivation, a high leverage built up in the steering mechanism that makes short turns easy. "Toe-touch" independent assisting brakes, near your feet, aid in making extremely cramped turns. New brake construction gives smooth, positive braking at a touch of the foot. Brakes also hold tractor stationary.

Right-side Belt Pulley

- 37. Logical location on tractor for easy belting.
- 38. Plenty of clearance to drive belt at semi-vertical angles.

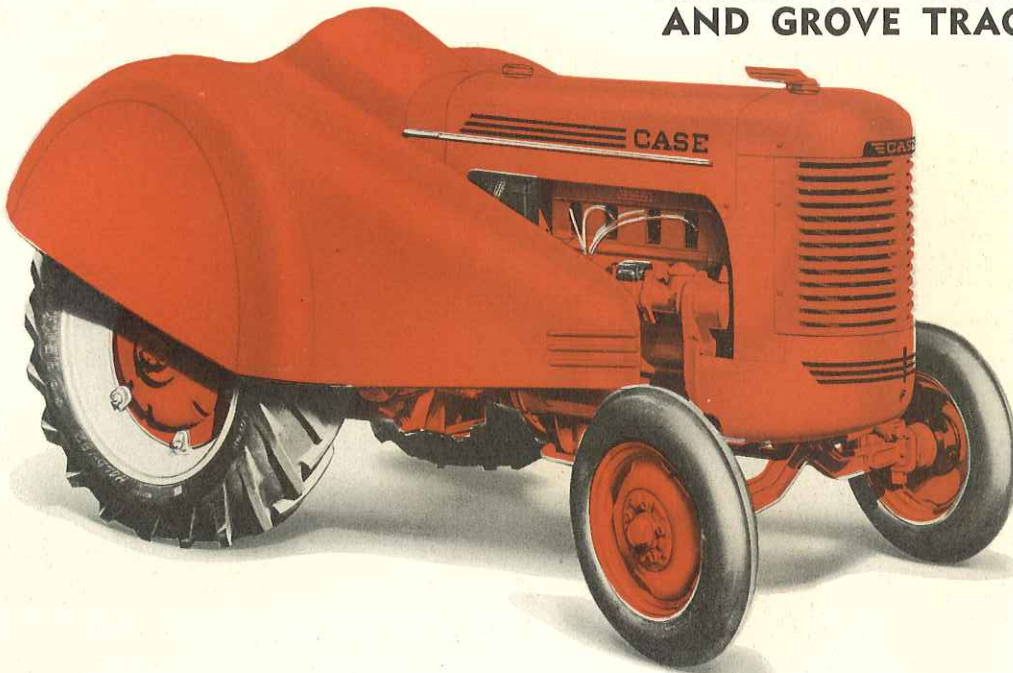
Responsive Engine

- 39. Quick starting in any weather with hot-spark magneto ignition.
- 40. Close, sensitive governing keeps driven machines up to speed at variable loads.
- 41. Lugging ability builds up to pull heavier loads at reduced engine speeds.
- 42. Automatic carburetion leans out fuel mixture for light loads; enriches it for heavy.



New

MODEL "SO" ORCHARD AND GROVE TRACTOR



43. Oil Bath Air Cleaner easily cleaned—feeds clean air to carburetor.
44. Filter-type fuel strainer maintains clean fuel line.
45. Automatic, thermostat-controlled engine temperature. Double capacity cooling. (Radiator shutter system available.)
46. New, easy fan pulley adjustment for belt.
47. Packless, ball-bearing water pump pre-lubricated and Neoprene-sealed at factory.
48. Automatic, full pressure lubrication to all engine, clutch and governor parts.
49. Easily removable oil screen keeps lubricating oil clean.

Oil Cushioned Clutch

50. Picks up loads smoothly and positively.

Life Time Transmission

51. All parts automatically lubricated and fully enclosed.
52. Quiet-running, smooth performing.
53. Heavy-duty, flexible roller chain final drive absorbs shock loads.
54. Built-in, life-time durability—less necessity for service.

Wide Speed Range Under Load

55. 4 gears forward. Any speed from 1½ to over 10 m.p.h. through simple gear changes.
56. Wide speed range under load in any gear reduces shifting.

Easy to Get Ready

57. "Slide-out" battery quickly serviced.
58. Few points to grease. Only one engine oil level to check.

Easy to Get At

59. Rod, crank bearings, and pistons readily accessible.
60. Sturdy, cross-mounted transmission shafts provide outside bearing adjustment if ever needed.
61. Clutch quickly and easily adjusted through convenient hand holes.

"Easy On—Easy Off" Implements

62. Built in, goose-neck mounting—only few points of attachment—implement attachment rigid.
63. Tractor backs into rear attachments easily.
64. Adjustable rear wheel tread fits any row-crop condition. Adjustment easily made along axle shaft.
65. Easily adjustable front wheels for narrow rows or for following ridges.

Full, 4-Point, 2-Plow Power

66. Power delivery at drawbar, belt pulley, or power take-off shaft. In addition, the "SC" provides row-crop power with Easy On—Easy Off implements.
67. Full power for 2 plows, 2-row lister, 2-row corn picker, combine, 8-foot tandem disk, 22-inch thresher, silo filler, hammer mill, and other machines requiring similar power.

J. I. CASE CO.

EST. 1842 INC.
RACINE, WIS., U.S.A.