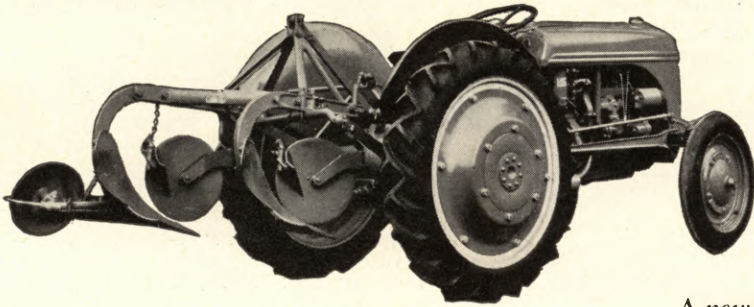


HOW the Ford Tractor with Ferguson System



is Entirely Different from All Others!

A *new idea* for attaching implements and controlling them, hydraulically, is the *big difference* between the Ford Tractor and all others. That *new idea* is the Ferguson System. It brings these important advantages:

1. Supplies Implement Penetration without weight.
2. Provides Traction without built-in weight.
3. Controls unit-implement depth, automatically.
4. Keeps front end down.
5. Automatically protects tractor and implement when an obstruction is hit.

PUTS EXTRA DOLLARS IN THE FARMER'S POCKET

Best of all, these advantages help the farmer lower production costs and increase his profits. They make possible a lightweight, low-cost tractor that is easy on fuel and so easy to operate any member of the family can help out.

PUTS EXTRA DOLLARS IN DEALER'S POCKETS, TOO!

Briefly, all this means more money to the Ford Tractor dealer. It means he has a tractor, ideal for the family farm. It means less stock with quicker turnover. It means happy customers. It means smaller investment in service parts. It means additional sales of specially-designed Ferguson Implements.



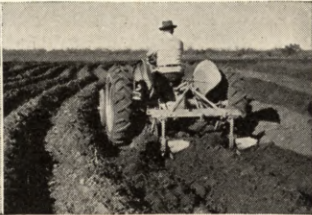
PLOWS. Wide variety of single and two-bottom wheelless plows for all requirements.



FERGUSON TILLER. All-purpose field cultivator or sub-soiler. Spring-trip resets tines on the "go."



HEAVY-DUTY MOWER. For highway or municipal use. Cutterbar raised or lowered by finger tip control.



TWO-ROW MIDDLEBUSTER. For all depths and row widths. Weighs only 200 lbs. Indestructible.



IMPROVED ROW-CROP CULTIVATOR. Two-way adjustable sweeps. Follows front tractor wheels like a shadow.



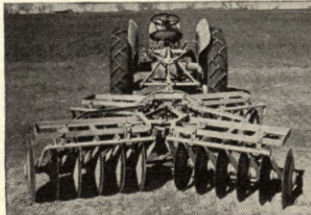
THREE-ROW RIDGER. For potatoes and vegetables. Bottoms adjustable for 24" to 30' rows. Has great strength.



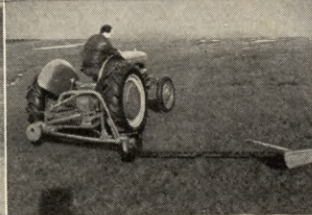
SPRING TINE CULTIVATOR. Can be operated full speed all day in land full of obstructions, without damage.



FOUR-ROW WEEDER. Works over crops without damage. Eliminates small weeds—breaks top crust.



DISC HARROW. Angle of cut can be instantly changed by finger tip hydraulic control, without stopping.



FARM MOWER. Quickly put on or taken off. Safety release for hidden obstructions. Finger tip control.



© Ford Motor Co.

OPPORTUNITY FOR A LIMITED NUMBER OF DEALERS

There are a few additional openings for dealers. If interested in selling the Ford Tractor with Ferguson System, write Department 801, Ferguson-Sherman Mfg. Corp., Dearborn, Mich., for full details.